

Network Management Card

Secure monitoring and management



Minimize IT downtime

Preventing downtime across IT infrastructure is mission critical. The Schneider Electric Network Management Card (NMC) enables secure remote monitoring and control of power infrastructure by connecting it directly to the network.

Remote management can save time and money with the ability to reboot hung devices, restoring functionality without deploying personnel. Secure remote monitoring and control of your power infrastructure can be managed through the easy-to-use web browser interface, via EcoStruxure™ IT Software or another SNMP-enabled system of your choice.



Monitoring and alarming



Wherever-you-go visibility



Preventative management



Security reinforcement

AP9544
Schneider Electric Network Management Card
for Easy UPS, 1-Phase

NMC Support Contract License

Customers with an AP9544 Network Management Card for APC Easy UPS On-line 1-Phase devices will now require a support contract license to access future firmware updates. A 12-month support contract is included with purchase of the card. Upon expiration of the provided support contract the purchase of a new support contract license is required to access future firmware updates.

Customers who purchase an NMC Support Contract license will gain the following additional benefits:

- More features faster
- Priority support
- Rapid cybersecurity updates

For more information on licensing, visit [se.com](https://www.se.com).

apc.com/secure-nmc

Life Is On

Schneider
Electric

Network Management Card Features

Improving resiliency and security in IT infrastructure management with remote power device management

EcoStruxure™ IT integration: Monitor and manage your equipment more efficiently. The vendor-neutral architecture delivers a new standard for proactive insights on critical assets of an IT environment.

Network Management System (NMS) compatible: Make device information available to your preferred NMS by forwarding SNMP traps (events) or polling across SNMP (v1/v3) using the PowerNet MIB.

Modbus TCP/IP support: Benefit from Modbus TCP/IP support with operational flexibility wired for the industry and energy business, to efficiently control or take remote readings from automated equipment.

Reboot equipment remotely: Quickly re-establish availability over your network and save dispatching technicians to remote locations.

Battery management for UPS: Manage and maintain the battery system with detailed battery information, providing early fault warning.

Flash upgradeable NMC firmware: Convenient remote installation of NMC device firmware updates.

PowerChute Network Shutdown software*: Graceful server shutdown with support for virtualized and hyperconverged environments. (VMware® ESX/ESXi, Microsoft® Hyper-V and SCVMM, Nutanix AHV)

* A separate license purchase is needed to benefit from all features



Notification

Receive alerts to quickly deal with issues



Scheduling

Customize shutdown and reboot of connected equipment to UPS



Data logging

Identify problematic trends before they escalate or export logs for analysis

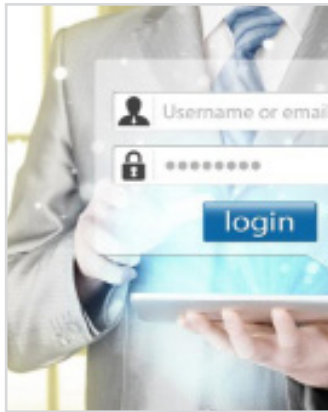


Event logging

Pinpoint timing and sequence of events leading up to an incident with event log

Capabilities

Secure by design



Advanced technology and features keep sensitive data secure with newest and best-in-class security compliance

- Secure Boot with Root of Trust for enhanced security
- Increased password security with stricter credentials and force password policy configurations
- EAPoL(Extensible Authentication Protocol over LAN) architecture used in IEEE 802.1x port-based network access control
- Secure access SSH, HTTPS (TLS 1.2)
- Secure email authentication
- Secure file transfer (SCP)
- 2048-bit encryption key support (SSH/web)
- 5-tier user access (Super User, Administrator, Device User, Read-Only User, Network-Only User)
- RADIUS protocol support for centralized user management and easier user sign on when remotely managing multiple or multi-site UPS

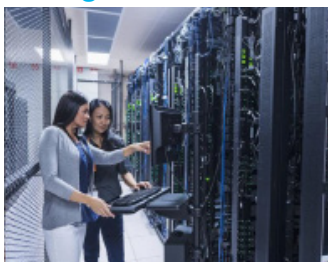
Performance



New processor provides a

- 1Gigabt Ethernet connection (RJ 45 10/100/1000 Base T)
- RADIUS support: Allows for centralized user management for easier user sign on when remotely managing multiple or multi site UPS
- Simultaneous multiple user login: Supports multiple NMC 3 sessions

Storage and ease of use



Extended memory space to accommodate increased event and data log storage

- Easy-to-use web user interface for full access and control of all available features
- Easily view your power infrastructure status and configure your settings
- Pre-loaded support for 9 languages (French, Italian, German, Spanish, Brazilian Portuguese, Russian, Korean, Japanese, and Simplified Chinese)
- Multiple user logins in simultaneous sessions with user access control (Super User, Administrator, Device User, Read-Only User, Network-Only User)

Network Management Card Support Contract License provides



Cybersecurity

- Be prepared for the unexpected — ensure secure, reliable uptime
- Access to the latest security updates
- Reduce operational risk and threats to business continuity



Innovation

- Keep your IT infrastructure current with the latest features
- Power your continuous journey to best-in-class resilience, security, and sustainability with frequent releases



Peace of mind

- High availability
- Disaster avoidance
- Ease of deployment
- Access to knowledgeable support
- Industry certifications and integrations

Support Contract license benefits

 E-mail and phone support	Schneider Electric will respond as quickly as possible during normal regional business hours
 Ongoing firmware updates	Includes product enhancements and security updates
 Access to new features	Firmware upgrades introducing new features increases value for existing install base
 Improved firmware update experience	Access to NMC Firmware Update Tool for activation of support contract licenses and for updating NMC firmware

The Support Contract license part numbers

Easy UPS Online	
License Part #	Support Contract License
FWENMC1P-ST1Y-DIGI	NMC3 for Easy UPS, 1-Phase - 1 Year Support Contract License
FWENMC1P-ST3Y-DIGI	NMC3 for Easy UPS, 1-Phase - 3 Year Support Contract License
FWENMC1P-ST5Y-DIGI	NMC3 for Easy UPS, 1-Phase - 5 Year Support Contract License

Discover Network Management Card options that work for your business.

apc.com/secure-nmc



Schneider Electric Industries SAS
35, rue Joseph Monier - CS 30323
F92506 Rueil-Malmaison Cedex